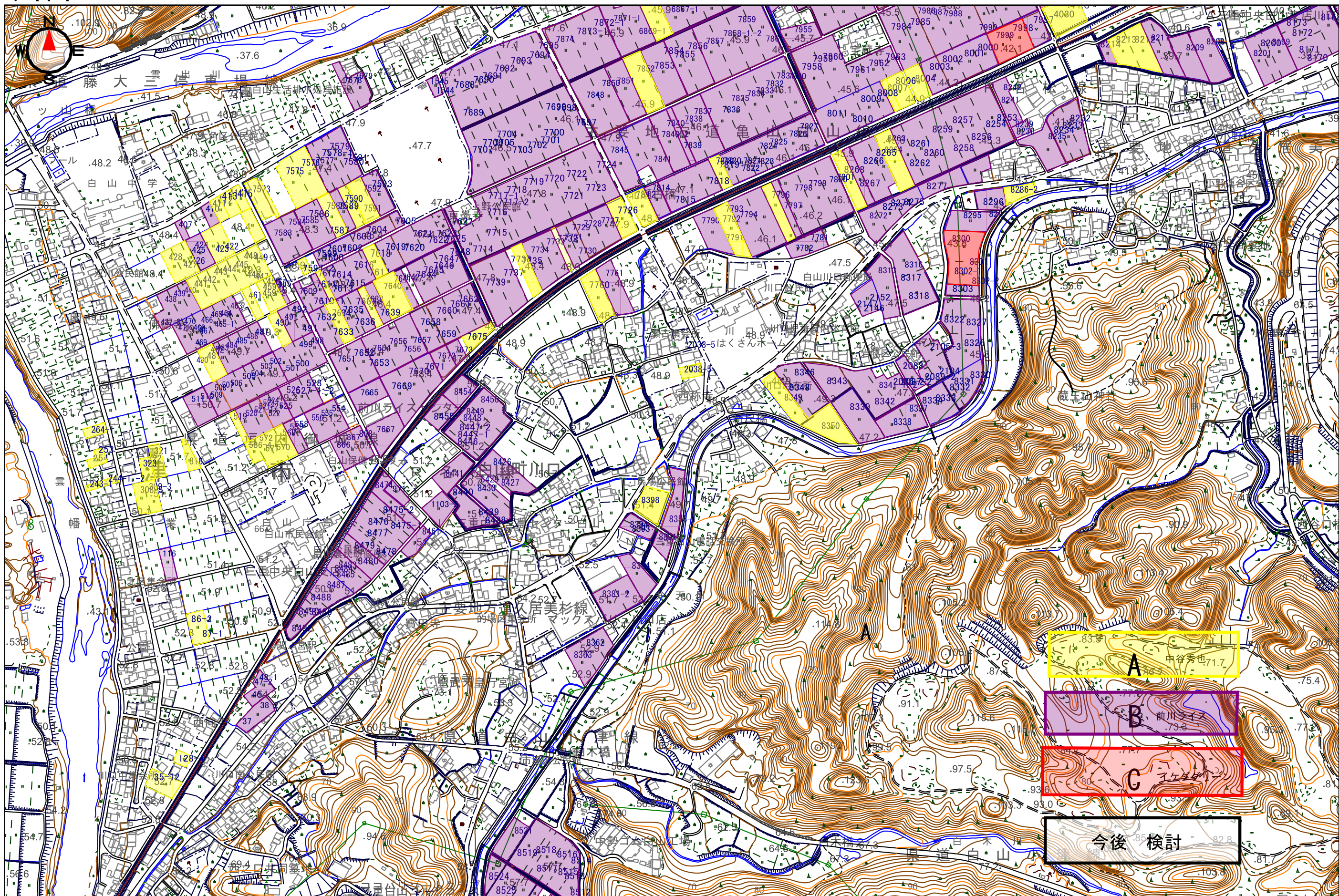


川口 1



今後 検討

0
1:6,000

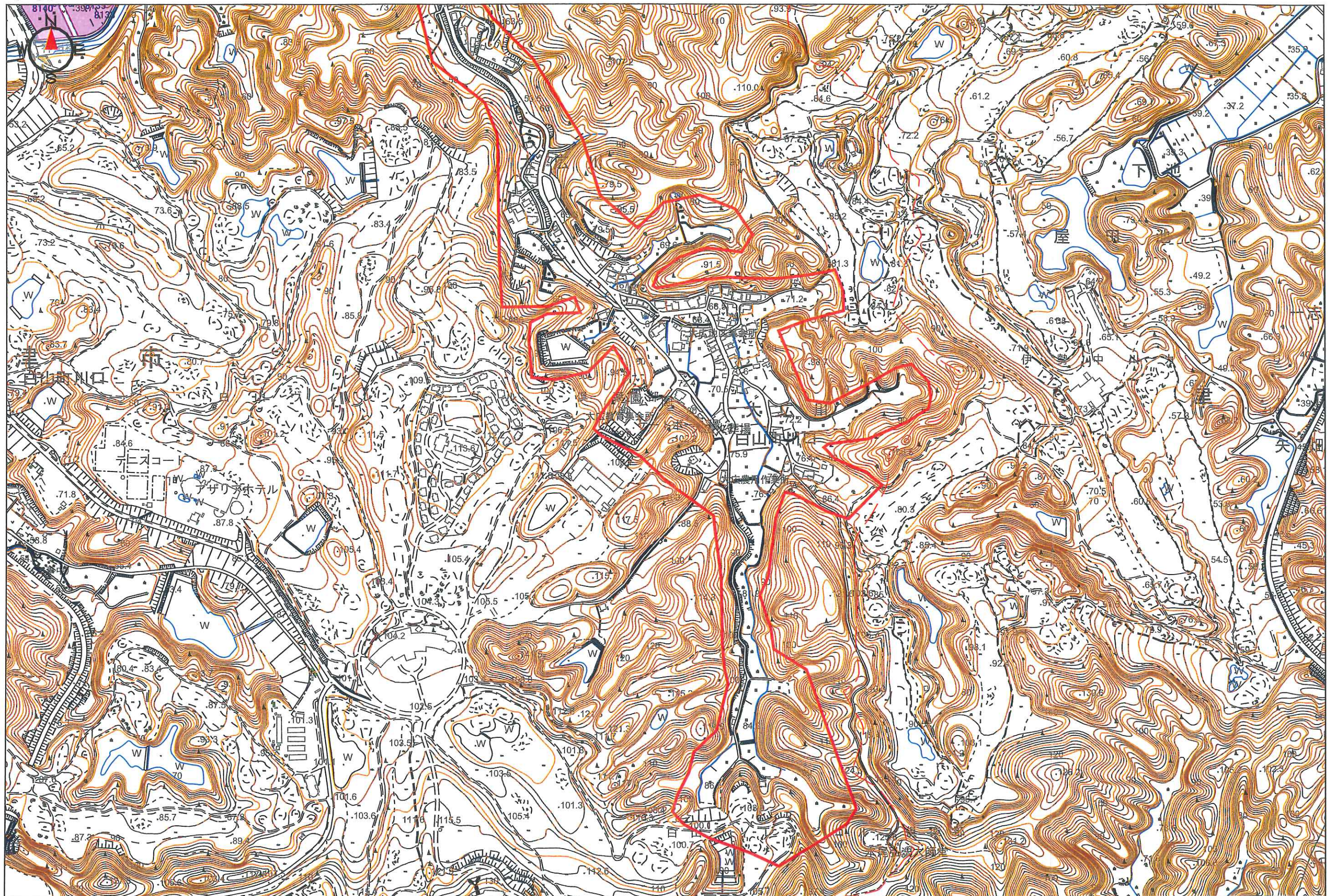
This is a detailed topographic map of a mountainous region in Japan. The map features contour lines indicating elevation, with labels such as 103.2, 101.2, 100, 99, 98, 97, 96, 95, 94, 93, 92, 91, 90, 89, 88, 87, 86, 85, 84, 83, 82, 81, 80, 79, 78, 77, 76, 75, 74, 73, 72, 71, 70, 69, 68, 67, 66, 65, 64, 63, 62, 61, 60, 59, 58, 57, 56, 55, 54, 53, 52, 51, 50, 49, 48, 47, 46, 45, 44, 43, 42, 41, 40, 39, 38, 37, 36, 35, 34, 33, 32, 31, 30, 29, 28, 27, 26, 25, 24, 23, 22, 21, 20, 19, 18, 17, 16, 15, 14, 13, 12, 11, 10, 9, 8, 7, 6, 5, 4, 3, 2, 1, 0. The map includes labels for '白山町市' (Shirayama Town), '白山川' (Shirayama River), and '白山川口' (Shirayama River Mouth). It also features a compass rose in the top left corner and a red line indicating a specific boundary or route.

600m

This is a detailed topographic map of a mountainous region. The map features numerous contour lines in brown, indicating elevation changes. A river, labeled '山道' (Mountain Road) and '津' (River), flows through the upper portion of the map. Several plots of land are highlighted in purple, each containing numerical data. These plots are located in the upper left, middle left, and lower right areas. The map also includes a compass rose in the top left corner, pointing North. Various labels in Chinese characters are scattered throughout, including '白山' (White Mountain) and '西山' (West Mountain). The overall terrain is rugged, with many peaks and valleys.



川口 4



川口 5

